

# **TECH-SHEET**

## **COALESCER ELEMENT SET REPLACEMENT INSTRUCTIONS**

### **WALKER AIRSEP CCE® SYSTEM CUMMINS QSB/QSC MARINE ENGINES (8" UNIT)**

Note: You may want to use rags or shop towels to prevent dripping oil during the procedure.

- 1)** Shut off engine.
- 2)** Open the security latch of the V-Band clamp located at the base or side of the AIRSEP.
- 3)** Remove V-Band clamp, and remove the Air Filter Assembly.
- 4)** Carefully remove AIRSEP top and flange. (Be careful not to lose the O-ring(s) required to seal the unit).
- 5)** Set top down. Grip the wire handle of the "Primary Element" facing you and smoothly pull the element out of the housing .
- 6)** Insert your finger into the top of the unit and grasp the tabs of the first stage element located in the base of the regulator section. Now remove the first stage element by pulling the element to the inside of the housing. It will slide out.

Re-install the new first stage element (puck) from the inside of the AIRSEP and push up until the lower tabs of the puck appear flush with the inside of the housing.

- 7)** Now take the new primary element and slide it into the housing so the window "opening" of the element is at the bottom, above the oil drain port of the AIRSEP.
- 8)** Push the element until a positive "lock" is felt. ( The element should now be seated like the original, the end should be flush with the housing edge).
- 9)** Line up the O-Ring(s) and reinstall the AIRSEP top, then air filter.
- 10)** Install the V-Band Clamp. Grasp and lock the overcenter handle of the V-band clamp. It should be a uniform fit around the entire perimeter of the unit. Check for any potential leaks, or misalignment.

**REPLACE FILTER SET WITH CUMMINS# 3971070 (41-2008)**  
**(Refer to Cummins manual for O-Ring replacement.)**

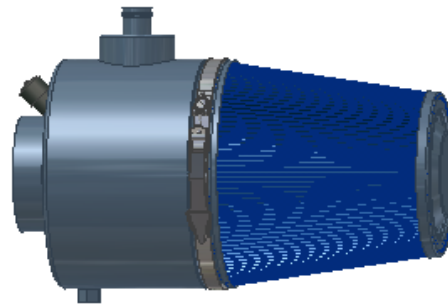
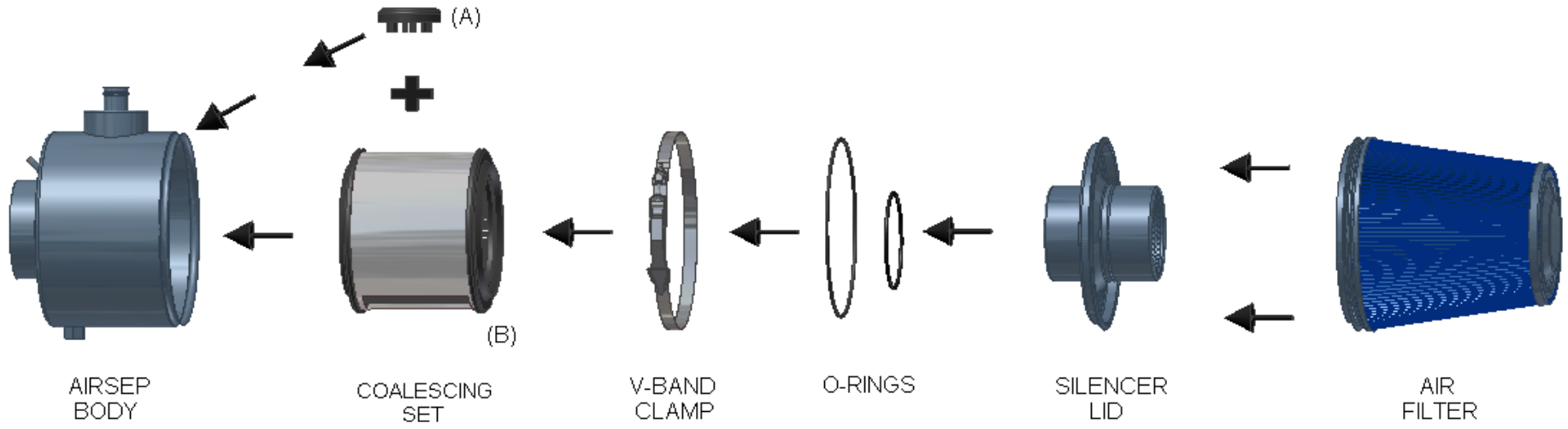
#### **AIR FILTER**

**SERVICE AIR FILTER WITH CLEANING KIT# 3973523 (BAF2000)**  
**REPLACE AIR FILTER WITH: CUMMINS# 3971069 (8" LONG) (41-1030)**  
**CUMMINS# 4931611 (6.75" LONG) (41-1146)**

-continued (See attached Diagram)

**SERVICE INFO**

AIRSEP® CCE - 8" UNIT / 10" UNIT / 12" UNIT





## Walker Engineering CCE AirSep®

Ready to Travel Ship Set Kit – Services 2 Engines!

For Cummins QSB And QSC Marine Engines

**Field Service kit for  
Cummins QSB and  
QSC Marine Engines  
factory equipped with  
Walker AirSep closed  
crankcase systems.**

**Each kit contains;  
2 Air Filter Elements  
2 Internal Coalescing Sets  
Inner and Outer O-Rings  
1 Air Filter Cleaning Kit**



**QSB Kit # 1000266, QSC Kit # 1000267**

**Call for pricing and lot size.**

Walker Engineering Enterprises, Inc.  
9255 San Fernando Road  
Sun Valley, CA 91352  
[www.walkerairsep.com](http://www.walkerairsep.com)

Phone (818) 252-7788  
Fax (818) 252-7785